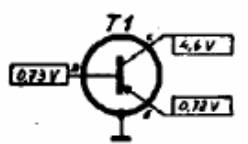
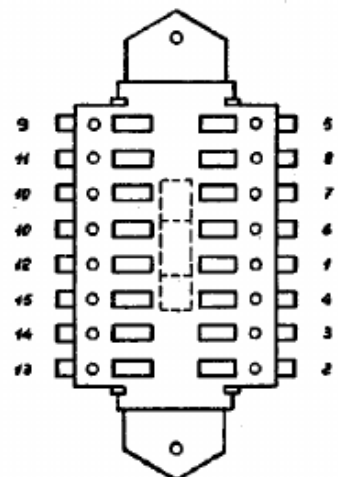
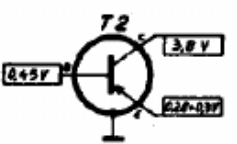


F.I. 462 KHz

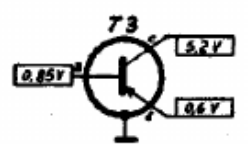
CONTATTI GAMMA	1	1	1	5	5	5	9	9	12	12	13
OC			•			•			•		•
OM		•				•			•		
OL	•					•			•		•



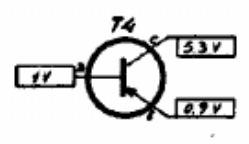
**T1**  
 BEREQ OC  
 1-2 0,3 Ω  
 3-4 0,4 Ω



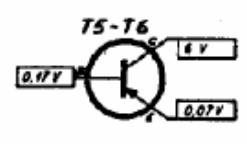
**T2**  
 BEREQ OM  
 1-2 1 Ω  
 7-8 0,2 Ω



**T3**  
 BEREQ OL  
 3-4 6 Ω  
 4-5 2,5 Ω  
 9-10 0,3 Ω



**T4**  
 OSC. OC  
 7-8 1,3 Ω  
 9-10 0,1 Ω  
 11-12 0,2 Ω



**T5-T6**  
 OSC. OM. OC  
 1-2 5,2 Ω  
 3-4 0,3 Ω  
 5-6 0,7 Ω

Tensioni misurate con voltmetro a 2000 Ω/V per batterie a 6V, in assenza di segnale.

Valori resistivi in Ω, capacitivi in pF salvo indicazioni specifiche.

Corrente a segnale zero 15 mA per 0,2W uscita 80 mA

**F.I. 1**  
 2-3 2,8 Ω  
 4-5 0,3 Ω

**F.I. 2**  
 1-2 4,2 Ω  
 2-3 2,4 Ω  
 4-5 0,4 Ω

**F.I. 3**  
 1-2 5,3 Ω  
 2-3 1,5 Ω  
 4-5 1,2 Ω